



Add : NO.2339, Fengchan Road, Fengdong New District, Xi'an City, Shaanxi Prov, China
Sales Tel : +86-29-38001214 Service Tel : +86-29-33687710, 4006-863-853
Website : <https://www.tonlyoverseas.com>

Local contact



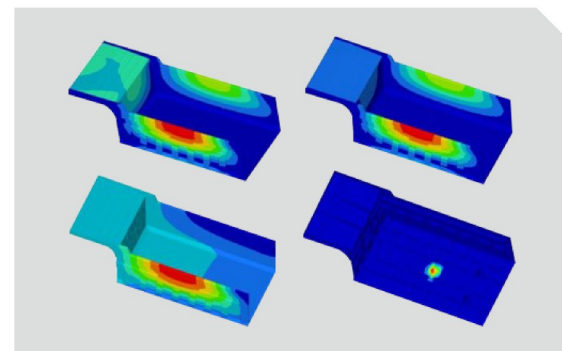
TL885A

off-road dump truck



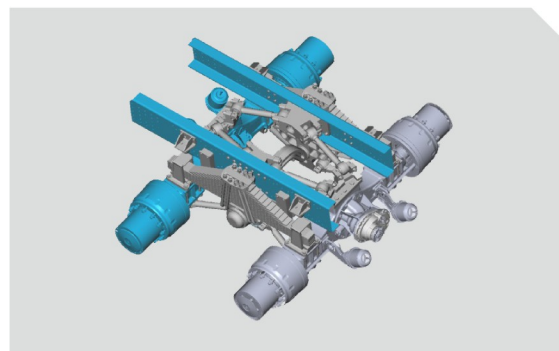
To be the leading supplier of engineering transportation solution and equipment

Components Introduction



① Cargo body

Reinforced structure with strong impact resistance.



② Suspension system

- The front suspension multi-level shock absorption element to improve driving comfort.
- The rear leaf spring clamping mechanism with TONLY patent is reliable and practical.



③ Tire

Special mining tire for mine only with longitudinal and transverse groove design, which provide excellent grip performance, comfort of operation, strong carrying capacity and long service life.



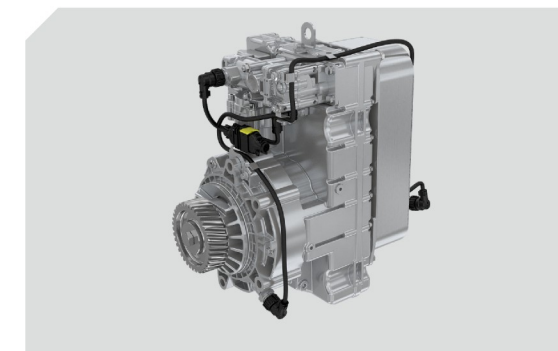
④ Intake system

Three stage combined air filter can improve the efficiency of air filtering, and improve the air clearness.



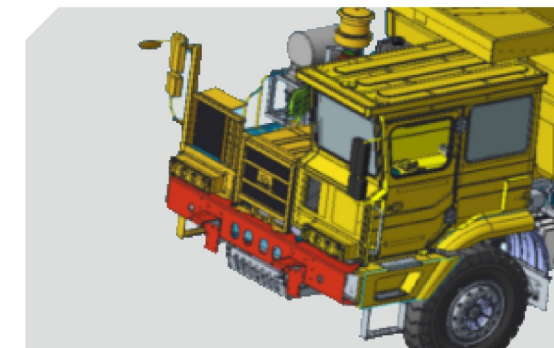
⑤ Steering system

Tonly developed full hydraulic steering system (TONLY owns all patent of this technology), reduce the steering oil temperature, steering operation is lighter, greatly improve the life cycle of the system components, and ensure the truck safety.



⑥ Hydraulic retarder

Transmission combined with hydraulic retarder can reduce the speed of the truck when going down a long slope, works long time and high power, reduce the wear out of braking components and extend the tire life time, ensure the operation safety.



⑦ Anti-collision structure

Anti-collision beam + bumper + through beam structure, effectively protects the driver and the truck.



⑧ FOPS/ROPS certificate

Tonly product is the only one obtained the certificate for big payload through severe test.



TL885A off-road dump truck

With new upgraded axle, the truck has great load capacity and high comprehensive transportation benefits.

The core patented technology of TL885 is of a flexible structure frame, which has strong absorption and attenuation shock ability, thereby significantly reducing the failure rate of truck chassis.

Full hydraulic steering and emergency steering system can be more light ,reliable and safe.

Main system characteristics

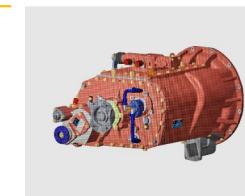
➤ Engine

- New performance optimization version, high efficient fuel saving.
- 13L displacement, strong power and wide power coverage.



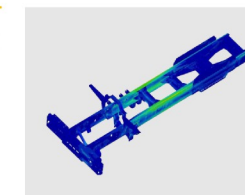
➤ Automatic transmission

- Single box and double intermediate shaft with simple structure, reasonable speed ratio, which is economical and practical.
- Optimize first shaft and eight gears to improve service life.



➤ Main frame

- Flexible bolt and rivet connection frame type with high torsional bearing efficiency and long service life.



➤ Axle Assembly

- TONLY and HANDE jointly design the special axle for mine transportation. Strengthened single casting axle housing, double reduction.
- Big torque, high transmission efficiency and high reliability.



➤ Special cab for mining truck

- The new generation cap with large space, wide visible range and comfortable manipulation.
- Compression molding Interior with lower noise and good quality.



➤ Lifting Device

- Specialized mine version lifting system with reliable and greater thrust.
- Optimization design of connecting bracket to strengthen support and improve lift safety.



Overall parameters	Model	TL885A
	Brand	Tonly
	Drive mode	6×4
	GVW (t)	105
	Rated payload (t)	70
	Kerb weight (t)	35
	Dimensions (mm)	9360 X 3766 X 4161
	Wheelbase (mm)	3775+1750
	Wheel track (mm)	2780/2594
	Minimum ground clearance (mm)	400
	Minimum turning radius (m)	11
	Maximum height of bucket lift (mm)	8304
	Maximum angle of bucket lift (°)	52
	Loading height (mm)	3963
	Braking distance (m)	17
	Maximum climbing degree (%)	≥32
	Maximum speed (km/h)	40
Engine	Model	WP13G530E310
	Manufacturer / Country	Weichai/China
	Power (hp/kw)	530/390
Transmission	Model	8DS240A
	Manufacturer / Country	Fast/China
	Input torque (N·m)	2400
	Manufacturer / Country	Hande/China
Axle	Load/T	25+40+40
Tire / Rim	Tire model	16.00-25
	Rim size	11.25/2.0-25

Container	Base plate material/thickness (mm)	NM400/16
	Rear plate material/thickness (mm)	NM400/12
	Front plate material/thickness (mm)	T700/10
	Side plate material/thickness (mm)	T700/10
	Container volume (m³)	36
Hydraulic system	Model	FC191
	Manufacturer / Country	HYVA/China
	Steering device	Fully hydraulic steering
	Lifting time (s)	27
	Descent time (s)	27
Weight distribution	Empty load	
	Front axle (kg)	15000
	Rear axle (kg)	20000
	Total weight (50% fuel) (kg)	35000
	Loaded	
	Front axle (kg)	25000
	Rear axle (kg)	80000
	Total weight (kg)	105000

